

WernerDeBleser

Tre Pezzi Piccoli

for piano trio

have@drop

Tre Pezzi Piccoli (Three Little Pieces) consists of three movements to be performed continuously (*attacca*).

Orchestration:

Part I: can be played by flute, oboe, clarinet Bb (soprano saxophone) or violin.

Part II: can be played by English horn, clarinet Bb (2), alto saxophone, viola or violoncello.

Score in C.

Duration: ca. 5 minutes

Tre Pezzi Piccoli

for piano trio

WernerDeBleser

1. Allegro agitato (♩=166)

Part I

Part II

Piano

1. Allegro agitato (♩=166)

pp

5

Part I

Part II

Pno.

9

Part I

Part II

Pno.

ff

mf

13

Part I

Part II

Pno.

ff *p*

ff *p*

p *f*

==

17

Part I

Part II

Pno.

ff *p* *f*

ff *p* *f*

p *f*

==

21

Part I

Part II

Pno.

p

p

p

24

Part I

Part II

Pno.

p

p

mf

p



28

Part I

Part II

Pno.



32

Part I

Part II

Pno.

36

Part I

ff

Part II

ff

Pno.

ff

Measures 36-38: Part I and Part II play a half note G4, quarter note F#4, quarter note E4, quarter note D4. The piano accompaniment is in grand staff, 2/4 time, with a half note G4, quarter note F#4, quarter note E4, quarter note D4. The piano part is marked ff.



39

Part I

Part II

Pno.

Measures 39-41: Part I and Part II play a half note G4, quarter note F#4, quarter note E4, quarter note D4. The piano accompaniment is in grand staff, 2/4 time, with a half note G4, quarter note F#4, quarter note E4, quarter note D4. The piano part is marked ff.



42

Part I

Part II

Pno.

Measures 42-45: Part I and Part II play a half note G4, quarter note F#4, quarter note E4, quarter note D4. The piano accompaniment is in grand staff, 2/4 time, with a half note G4, quarter note F#4, quarter note E4, quarter note D4. The piano part is marked ff.

46

Part I

Part II

Pno.

Measures 46-48: Part I and Part II are staves with whole rests. The Piano (Pno.) part consists of two staves with a continuous eighth-note accompaniment in 3/4 time.

49

Part I

Part II

Pno.

Measures 49-51: Part I and Part II have rests followed by notes in measures 50 and 51. The Piano (Pno.) part continues with eighth-note accompaniment, with a change in the right-hand melody in measure 50.

52

Part I

Part II

Pno.

Measures 52-54: Part I and Part II have notes and rests. The Piano (Pno.) part continues with eighth-note accompaniment.

55

Part I

Part II

Pno.



58

Part I

Part II

Pno.

pp



62

Part I

Part II

Pno.

65

Part I

ff

tr

ff

Part II

ff

tr

ff

Pno.

mf

Measures 65-67. Part I and II have trills and rests. Piano accompaniment has a continuous eighth-note pattern.

68

Part I

tr

p

Part II

tr

p

Pno.

p

f

Measures 68-70. Part I and II have trills and rests. Piano accompaniment has a continuous eighth-note pattern.

71

Part I

tr

tr

ff

p

f

Part II

tr

tr

ff

p

f

Pno.

p

f

Measures 71-73. Part I and II have trills and rests. Piano accompaniment has a continuous eighth-note pattern.

74

Part I

Part II

Pno.

77

Part I

Part II

Pno.

80

Part I

Part II

Pno.

attacca

2. Adagio (♩=56)

Part I

Part II

Pno.

pp

88

Part I

Part II

Pno.

p

92

Part I

Part II

Pno.

mf

mf

f

8va

96

Part I

Part II

Pno.

p

pp

pp

99

Part I

Part II

Pno.

pp

pp

103 **accel.**

Part I

Part II

Pno.

attaca

cresc.

cresc.

cresc.

attaca

3. Vivo (♩=160)

Part I

Part II

Pno.



111

Part I

Part II

Pno.



115

Part I

Part II

Pno.



118

Part I

mf *f*

Part II

Pno.

Measures 118-120. Part I: Treble clef, 2/4 time. Measure 118: Rest, eighth rest, eighth note G4, quarter note A4, quarter note B4. Measure 119: Quarter note B4, quarter note A4, quarter note G4, quarter rest. Measure 120: Whole rest. Part II: Treble clef, 2/4 time. Measure 118: Quarter note G4, quarter note A4, quarter note B4, quarter note C5. Measure 119: Quarter note B4, quarter note A4, quarter note G4, quarter note F#4. Measure 120: Quarter note E4, quarter note D4, quarter note C4, quarter note B3. Piano: Grand staff, 2/4 time. Right hand: Quarter note G4, quarter note A4, quarter note B4, quarter note C5. Left hand: Quarter note G3, quarter note F#3, quarter note E3, quarter note D3.



121

Part I

mp

Part II

mp

Pno.

mp

Measures 121-124. Part I: Treble clef, 3/4 time. Measure 121: Quarter note G4, quarter note A4, quarter note B4. Measure 122: Quarter note C5, quarter note B4, quarter note A4. Measure 123: Quarter note G4, quarter note F#4, quarter note E4. Measure 124: Quarter note D4, quarter note C4, quarter note B3. Part II: Treble clef, 3/4 time. Measure 121: Quarter note G4, quarter note A4, quarter note B4. Measure 122: Quarter note C5, quarter note B4, quarter note A4. Measure 123: Quarter note G4, quarter note F#4, quarter note E4. Measure 124: Quarter note D4, quarter note C4, quarter note B3. Piano: Grand staff, 3/4 time. Right hand: Quarter note G4, quarter note A4, quarter note B4. Left hand: Quarter note G3, quarter note F#3, quarter note E3.



125

Part I

f

Part II

f

Pno.

f

Measures 125-128. Part I: Treble clef, 7/8 time. Measure 125: Quarter note G4, quarter note A4, quarter note B4. Measure 126: Quarter note C5, quarter note B4, quarter note A4. Measure 127: Quarter note G4, quarter note F#4, quarter note E4. Measure 128: Quarter note D4, quarter note C4, quarter note B3. Part II: Treble clef, 7/8 time. Measure 125: Quarter note G4, quarter note A4, quarter note B4. Measure 126: Quarter note C5, quarter note B4, quarter note A4. Measure 127: Quarter note G4, quarter note F#4, quarter note E4. Measure 128: Quarter note D4, quarter note C4, quarter note B3. Piano: Grand staff, 7/8 time. Right hand: Quarter note G4, quarter note A4, quarter note B4. Left hand: Quarter note G3, quarter note F#3, quarter note E3.

129

Part I

Part II

Pno.

f

133

Part I

Part II

Pno.

ff

137

Part I

Part II

Pno.

ff

141

Part I

Part II

Pno.

ff



145

Part I

Part II

Pno.

f



149

Part I

Part II

Pno.

p cresc.



153

Part I

ff

Part II

ff

Pno.

ff

Measures 153-155. Part I: Treble clef, 6/8 time, key of D major. Measure 153: D5 (fermata). Measure 154: D5 (fermata). Measure 155: D5 (fermata). Part II: Treble clef, 6/8 time, key of D major. Measure 153: D5 (fermata). Measure 154: D5 (fermata). Measure 155: D5 (fermata). Piano: Grand staff, 6/8 time, key of D major. Measure 153: D5 (fermata). Measure 154: D5 (fermata). Measure 155: D5 (fermata). Dynamics: *ff* for all parts.

156

Part I

mf

Part II

mf

Pno.

mf

Measures 156-159. Part I: Treble clef, 6/8 time, key of D major. Measure 156: D5 (fermata). Measure 157: D5 (fermata). Measure 158: D5 (fermata). Measure 159: D5 (fermata). Part II: Treble clef, 6/8 time, key of D major. Measure 156: D5 (fermata). Measure 157: D5 (fermata). Measure 158: D5 (fermata). Measure 159: D5 (fermata). Piano: Grand staff, 6/8 time, key of D major. Measure 156: D5 (fermata). Measure 157: D5 (fermata). Measure 158: D5 (fermata). Measure 159: D5 (fermata). Dynamics: *mf* for all parts.

160

Part I

mf

Part II

mf

Pno.

mf

Measures 160-163. Part I: Treble clef, 6/8 time, key of D major. Measure 160: D5 (fermata). Measure 161: D5 (fermata). Measure 162: D5 (fermata). Measure 163: D5 (fermata). Part II: Treble clef, 6/8 time, key of D major. Measure 160: D5 (fermata). Measure 161: D5 (fermata). Measure 162: D5 (fermata). Measure 163: D5 (fermata). Piano: Grand staff, 6/8 time, key of D major. Measure 160: D5 (fermata). Measure 161: D5 (fermata). Measure 162: D5 (fermata). Measure 163: D5 (fermata). Dynamics: *mf* for all parts.

164

Part I

mf *f*

Part II

mf *f*

Pno.

f

Measures 164-166. Part I and Part II are in treble clef, Pno. is in grand staff. Dynamics: *mf*, *f*, *mf*, *f*, *f*.



167

Part I

mf

Part II

mf

Pno.

mf

Measures 167-169. Part I and Part II are in treble clef, Pno. is in grand staff. Dynamics: *mf*, *mf*, *mf*.



170

Part I

Part II

Pno.

Measures 170-172. Part I and Part II are in treble clef, Pno. is in grand staff. Time signature changes to 6/8 at measure 170.

173

Part I

ff

Part II

ff

Pno.

The musical score for measures 173-175 of 'Tre Pezzi Piccoli' is written for three parts: Part I, Part II, and Piano (Pno.). The key signature is one sharp (F#) and the time signature is 7/8. The music is marked 'ff' (fortissimo). The score shows measures 173, 174, and 175. Measure 173 has a repeat sign. Measure 174 has a repeat sign. Measure 175 has a repeat sign. The music consists of eighth and sixteenth notes, with some beamed sixteenth notes in the piano part.

Flute

Tre Pezzi Piccoli

for piano trio

WernerDeBleser

1. Allegro agitato (♩=166)

guitar ()

2

pp

7

10

ff

ff

14

p

ff

19

p

f

22

2

p

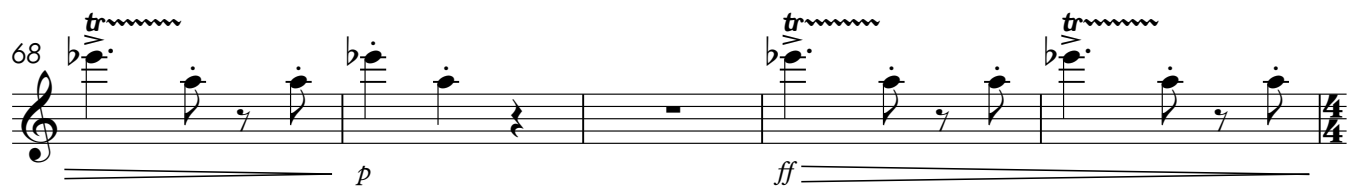
27

p

36

ff

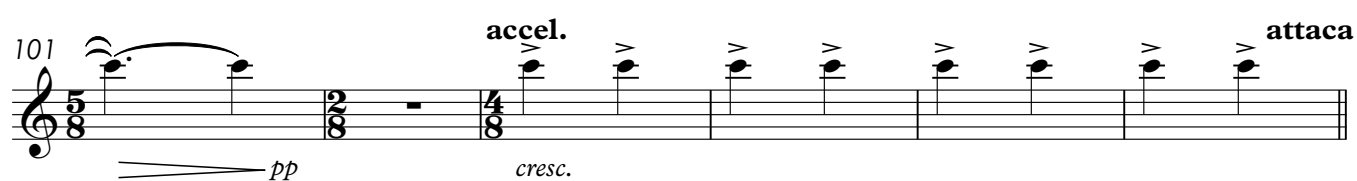
41



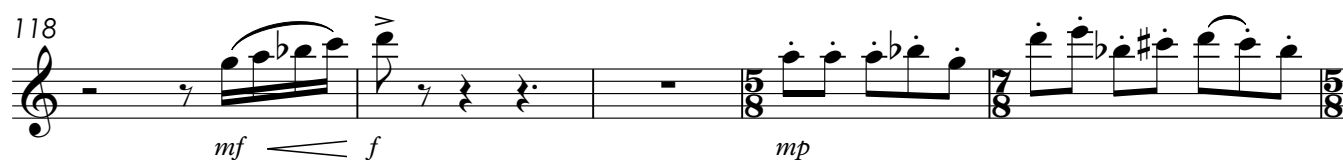
attacca

pp

2. Adagio (♩=56)



3. Vivo (♩=160)



137 *ff*

141

145 *f*

149 *p cresc.*

153 *ff*

158 *mf* *mf* 2

164 *mf* *f*

168 *mf*

172 *ff*

Tre Pezzi Piccoli

for piano trio

WernerDeBleser

1. Allegro agitato (♩=166)

Wingre agitato (1863)

2

7

10

14

19

22

27

36

41

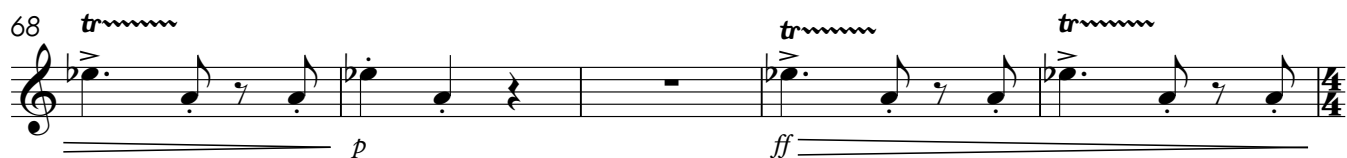
pp

ff

p

f

tr



2. Adagio (♩=56)

p

88

92 *mf*

97 *p*

101 *pp* *cresc.* *attaca*

3. Vivo (♩=160)

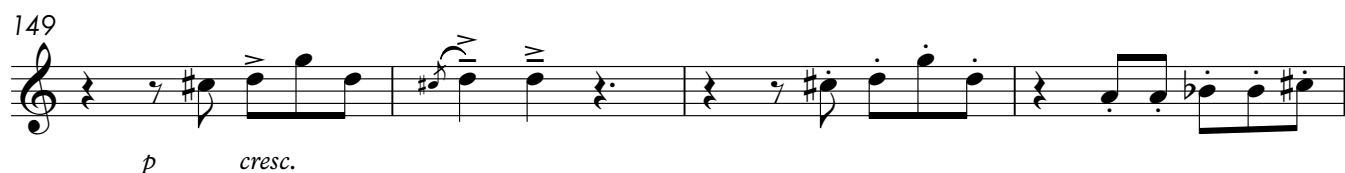
f

114 *mf* *f*

118 *mp*

123 *f*

127 8



Clarinet in B \flat

Tre Pezzi Piccoli

for piano trio

WernerDeBleser

1. Allegro agitato (♩=166)

2

pp

7

10

tr

ff

14

tr

p

ff

tr

19

p *f*

22

2

p

27

p

36

ff

41

46

p

54

p

60

pp

63

ff

68

p

ff

73

p

f

76

p

ff

79

p

ff

pp

attacca

2. Adagio ($\text{♩}=56$)

p

88

mf

97

p

101 *accel.* *cresc.* *attaca*

pp

3. Vivo ($\text{♩}=160$)

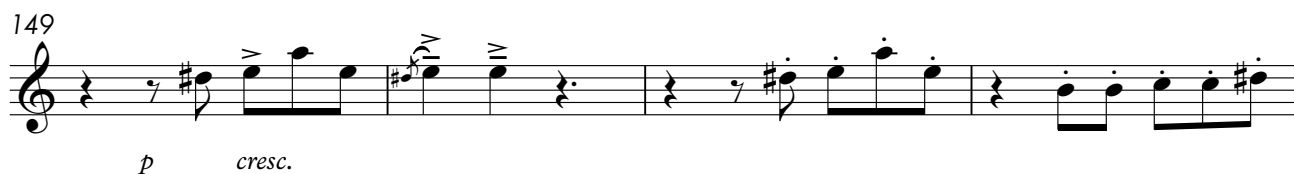
f *mp*

114 *mf* *f*

118 *mf* *f* *mp*

123 *f*

127 *f* 8



Violin

Tre Pezzi Piccoli

for piano trio

WernerDeBleser

1. Allegro agitato (♩=166)

Violin score for the first piece, "Allegro agitato" (♩=166). The score is written in treble clef and consists of nine staves of music. The key signature is one flat (B-flat). The time signature changes from 4/4 to 3/4 and back to 4/4. The score includes various musical notations such as rests, eighth notes, sixteenth notes, and trills. Dynamics include *pp*, *ff*, *p*, and *f*. The score is marked with a 2-measure rest at the beginning and a 2-measure rest at the end of the first system. The piece concludes with a final 3/4 time signature.

2

pp

7

10

ff

tr

14

p

ff

tr

tr

19

p *f*

22

2

p

27

p

36

ff

41

46

4

p

54

p

60

pp

63

ff

tr

68

p

tr

73

p *f*

76

p *ff*

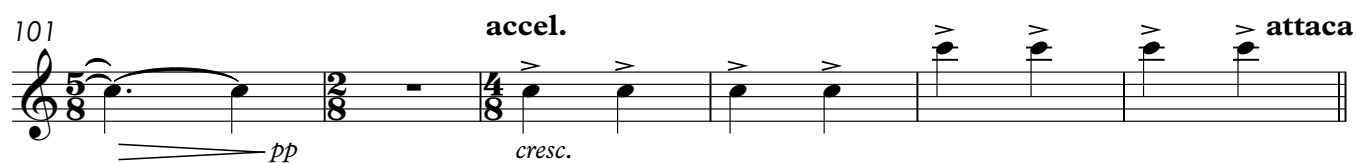
79

p *pp*

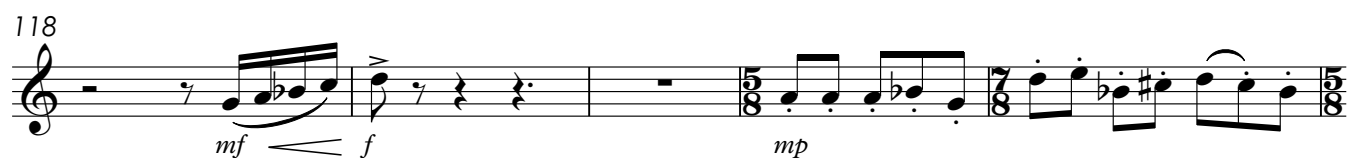
tr

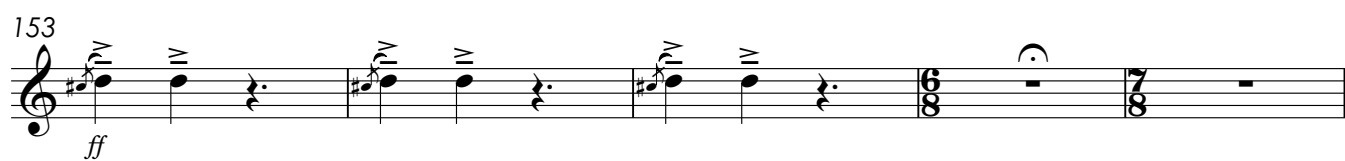
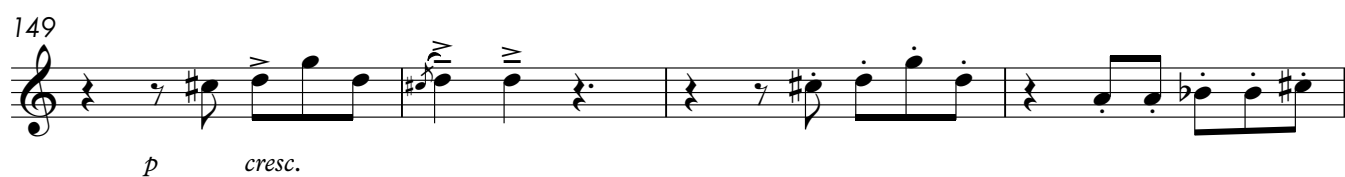
attacca

2. Adagio (♩=56)



3. Vivo (♩=160)





46

4

p

54

60

pp

63

ff

tr

68

p

tr

73

p

76

p

80

p

tr

pp

attacca

2. Adagio (♩=56)

3

89 *p*

93 *mf*

97 *p*

101 *pp* *cresc.* *accel.* *attaca*

3. Vivo (♩=160)

4

114 *f* *mp*

118 *mf* *f*

122 *f*

126 *mp*

129 *f*

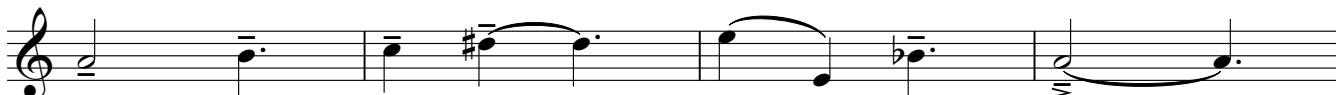
133



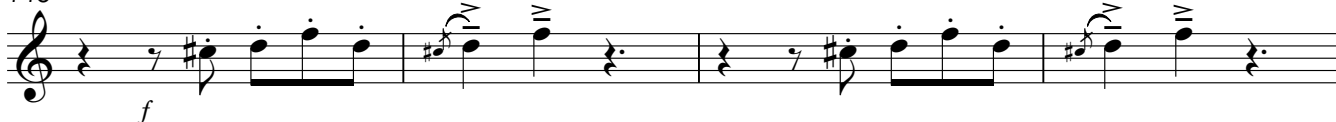
137



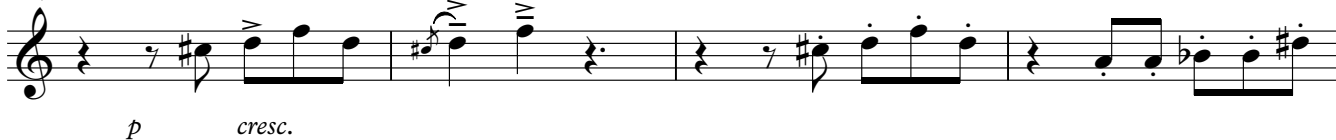
141



145



149



153



158



164



168



172



Clarinet in B \flat 2

Tre Pezzi Piccoli

for piano trio

WernerDeBleser

1. Allegro agitato (♩=166)

[illegible]

46

4

p

54


54

60

pp

pp

63

68 

73

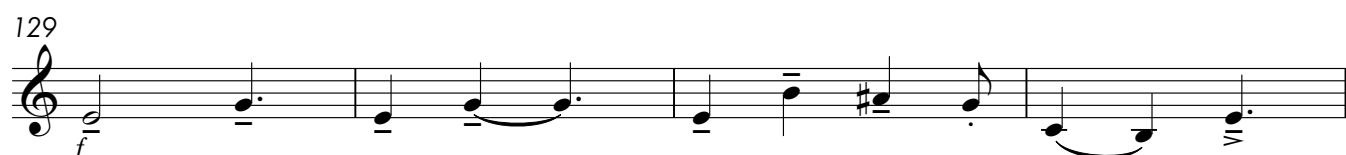
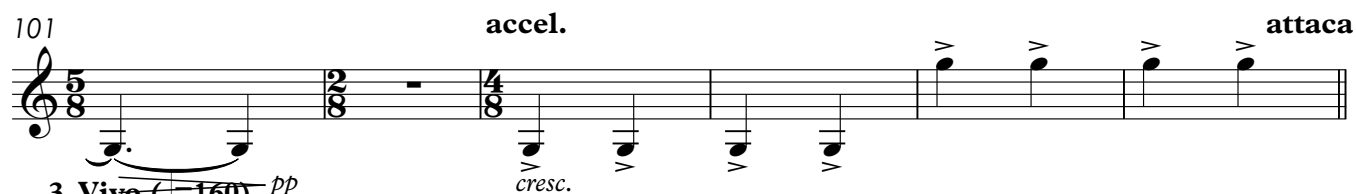
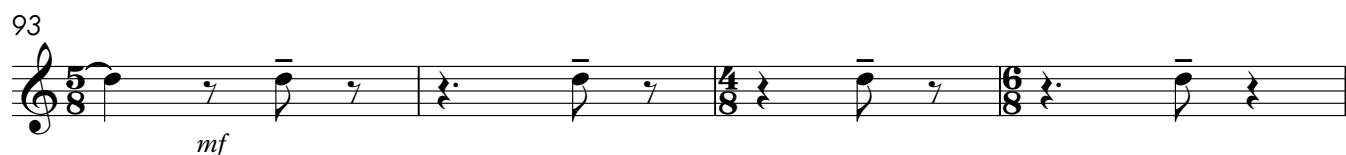
p *f*

76

76

p *ff*

80 *tr* **attacca**

2. Adagio ($\text{♩}=56$)

133



137



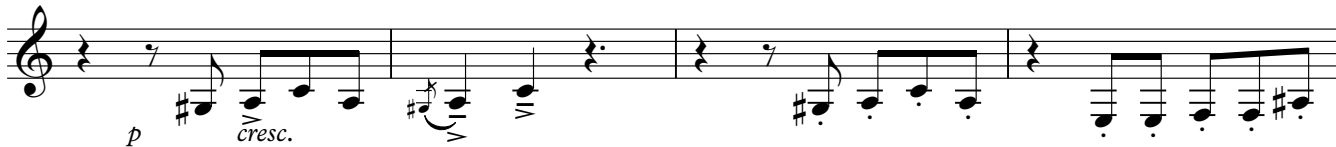
141



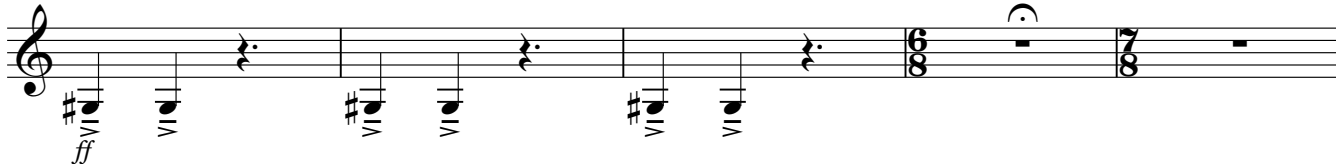
145



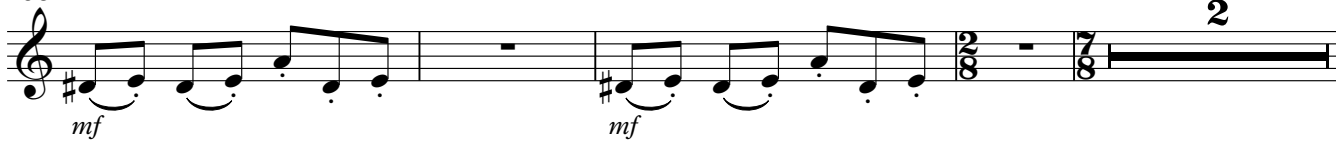
149



153



158



164



168



172



Alto Saxophone

Tre Pezzi Piccoli

for piano trio

WernerDeBleser

1. Allegro agitato (♩=166)

2

pp

7

10

ff

tr

14

p

ff

tr

tr

19

p

f

22

2

p

27

p

36

ff

41

80

p *pp* **attacca**

2. Adagio (♩=56)

3

89

p

93

mf

97

p

101

pp

cresc.

attaca

Detailed description: This block contains the musical notation for the second movement, 'Adagio'. It begins with a treble clef and a 5/8 time signature. A large '3' is written above the first staff, indicating a triplet. The first staff shows a triplet of eighth notes. The second staff starts at measure 89 and features a series of eighth and sixteenth notes, with a dynamic marking of *p*. The third staff starts at measure 93 and continues the melodic line with a dynamic marking of *mf*. The fourth staff starts at measure 97 and includes a dynamic marking of *p*. The fifth staff starts at measure 101 and features a dynamic marking of *pp*, followed by a crescendo (*cresc.*) and an 'attaca' marking. The time signature changes from 5/8 to 2/8, then to 4/8, and finally to 6/8.

3. Vivo (♩=160)

4

114

f

mf

f

118

mp

122

f

126

129

f

Detailed description: This block contains the musical notation for the third movement, 'Vivo'. It begins with a treble clef and a 7/8 time signature. A large '4' is written above the first staff, indicating a quadruplet. The first staff shows a quadruplet of eighth notes. The second staff starts at measure 114 and features a series of eighth and sixteenth notes, with a dynamic marking of *f*. The third staff starts at measure 118 and continues the melodic line with a dynamic marking of *mp*. The fourth staff starts at measure 122 and includes a dynamic marking of *f*. The fifth staff starts at measure 126 and continues the melodic line. The sixth staff starts at measure 129 and features a dynamic marking of *f*. The time signature changes from 7/8 to 6/8, then to 3/4, and finally to 5/8.

133



137



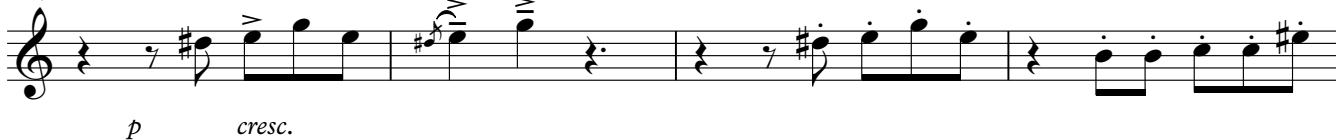
141



145



149



153



158



164



168



172



Viola

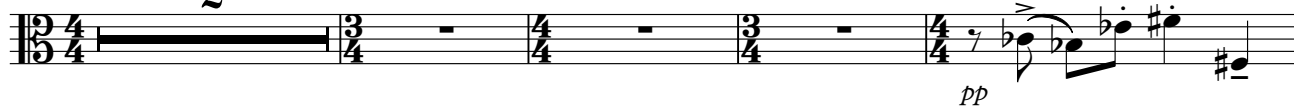
Tre Pezzi Piccoli

for piano trio

WernerDeBleser

1. Allegro agitato (♩=166)

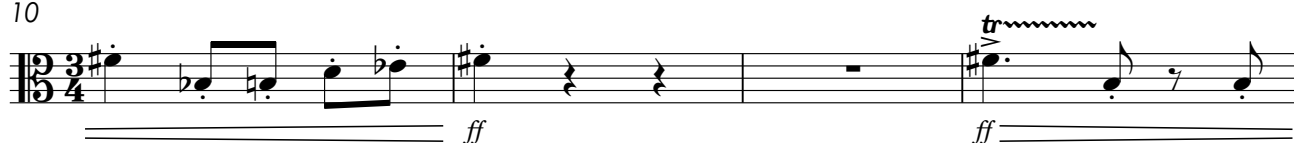
2



7



10



14



19



22



27



36



41



46



54



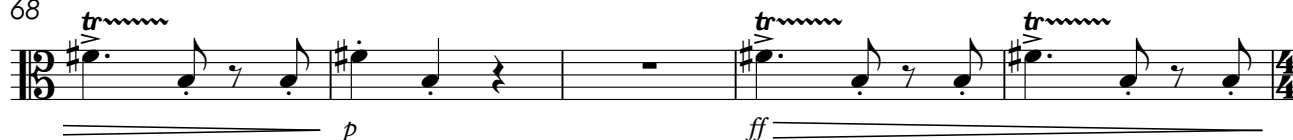
60



63



68



73



76

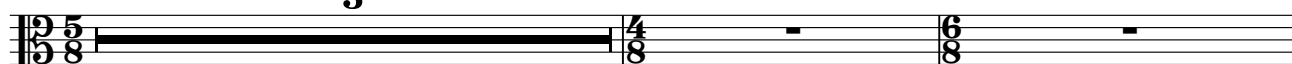


80



2. Adagio (♩=56)

3



89



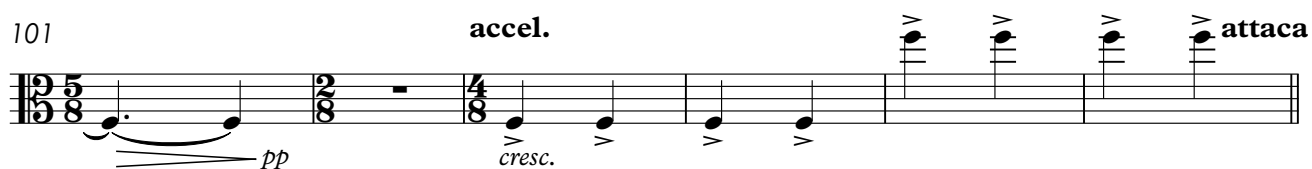
93



97



101



3. Vivo (♩=160)

4



114



118



122



126



129



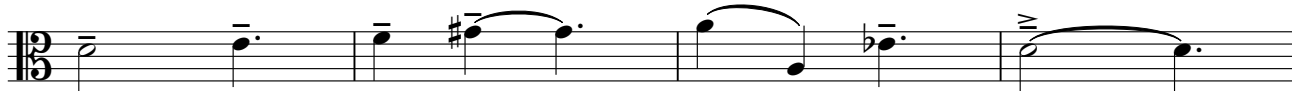
133



137



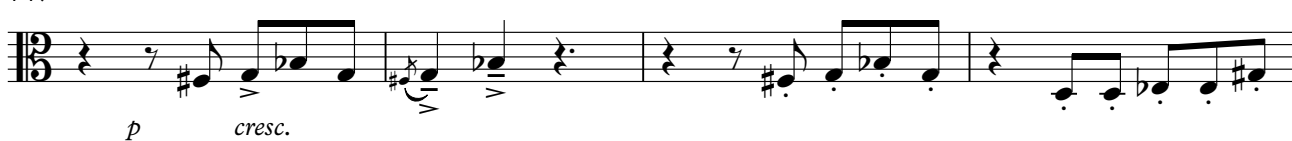
141



145



149



153



158



164



168



172



Tre Pezzi Piccoli

for piano trio

WernerDeBleser

1. Allegro agitato (♩=166)

2

pp

7

10

tr

ff

14

tr

p

ff

19

p

f

22

2

p

27

p

36

ff

41

46



54



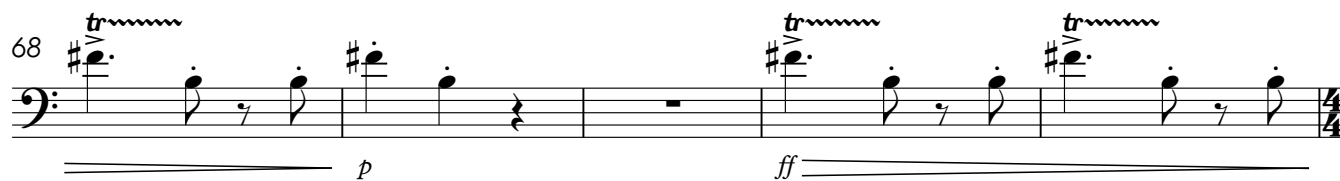
60



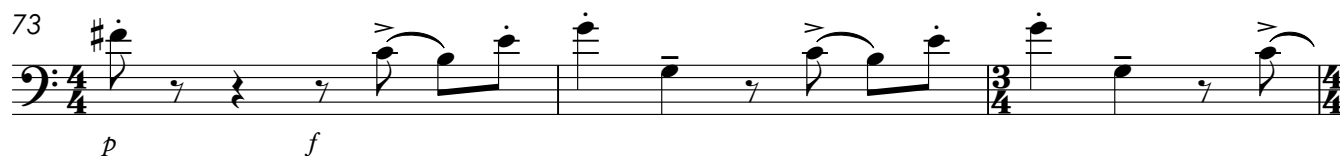
63



68



73



76

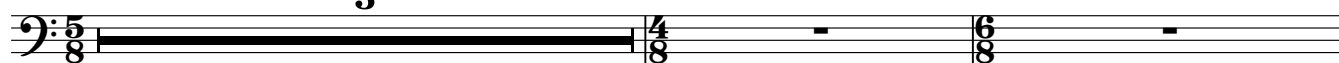


80



2. Adagio (♩=56)

3



89



93

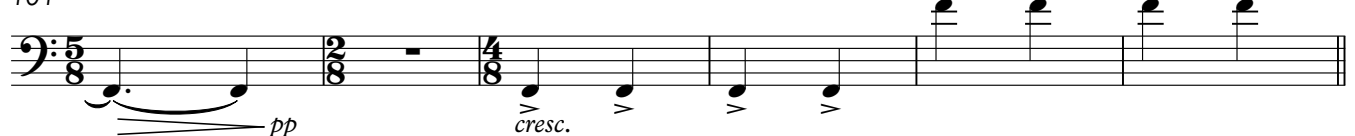


97



101

accel.



3. Vivo (♩=160)

4



114



118



122



126



129



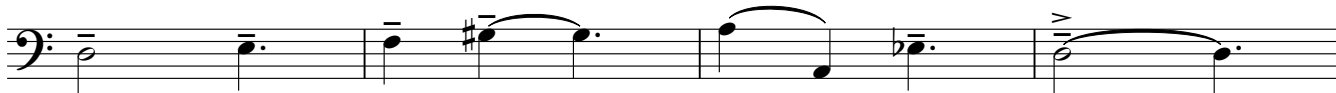
133



137



141



145



149



153



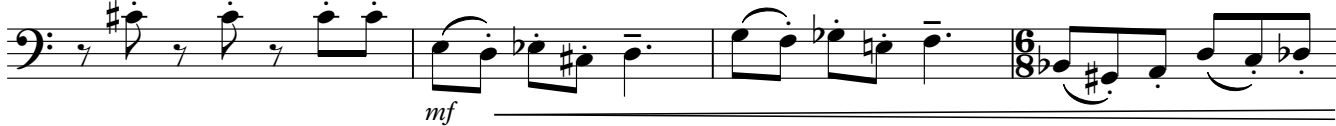
158



164



168



172

