

LE LUTIN FUNAMBULE

Michel DEFOURNY

2024

Piano



Note:

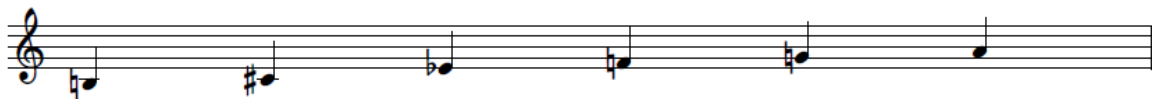
This small note is written to help performers read easily the score of this piece of music.

Most parts of this piece use whole-tone scales, using conventionally and constantly the following sets of alterations:

- A-type scale



- B-type scale



Note just that the central part (measures 28 to 51) can be considered as atonal and caution must be paid to all notes/alterations.

Le lutin funambule

Michel DEFOURNY, 2024

♩ = 150

mf

mf

A

$\text{♩} = 90$

25 26 27 28 29

Rit
p

30 31 32 33

cresc.
cresc.

34 35 36 37

(cresc.)
(cresc.)

38 39 40 41

(cresc.)
(cresc.)

42 43 44

(cresc.)
ff
ff

45 8 46 47

dim.

dim.

48 49 50 51

(dim.)

(dim.)

52 **A1** 53 54

mp

mp

55 56 57 58

59 60 61 62 63

64 65 66 67 68 8

p

B

Detailed description: This system contains measures 64 through 68. The music is written for piano in a key with one flat (B-flat major or D minor). The right hand features a melodic line with eighth and sixteenth notes, while the left hand provides a harmonic accompaniment with chords and single notes. A dynamic marking of *p* (piano) is present. A section marker **B** is located below measure 65. A fermata is placed over measure 68.

8 *ff* *mf* *mf* $\text{♩} = 180$

69 70 71 72 73 74 75

Detailed description: This system contains measures 69 through 75. It begins with a dynamic marking of *ff* (fortissimo) and a tempo marking of $\text{♩} = 180$. The right hand has a melodic line with eighth notes, and the left hand has a rhythmic accompaniment of chords. A dynamic marking of *mf* (mezzo-forte) is present. The time signature changes to 4/4 at measure 72.

76 77 78 79

Detailed description: This system contains measures 76 through 79. The right hand continues with a melodic line, and the left hand provides harmonic support. A dynamic marking of *mf* is present. A fermata is placed over measure 79.

80 81 82

f

Detailed description: This system contains measures 80 through 82. The music features a more active right hand with sixteenth notes. A dynamic marking of *f* (forte) is present.

83 84 85 86

Detailed description: This system contains measures 83 through 86. The right hand has a melodic line with eighth notes, and the left hand has a rhythmic accompaniment. A dynamic marking of *f* is present. A fermata is placed over measure 86.

87 88 8 89

90 91 92 8

93 94 8 95 8 96 97

p *Rit* *p*

